

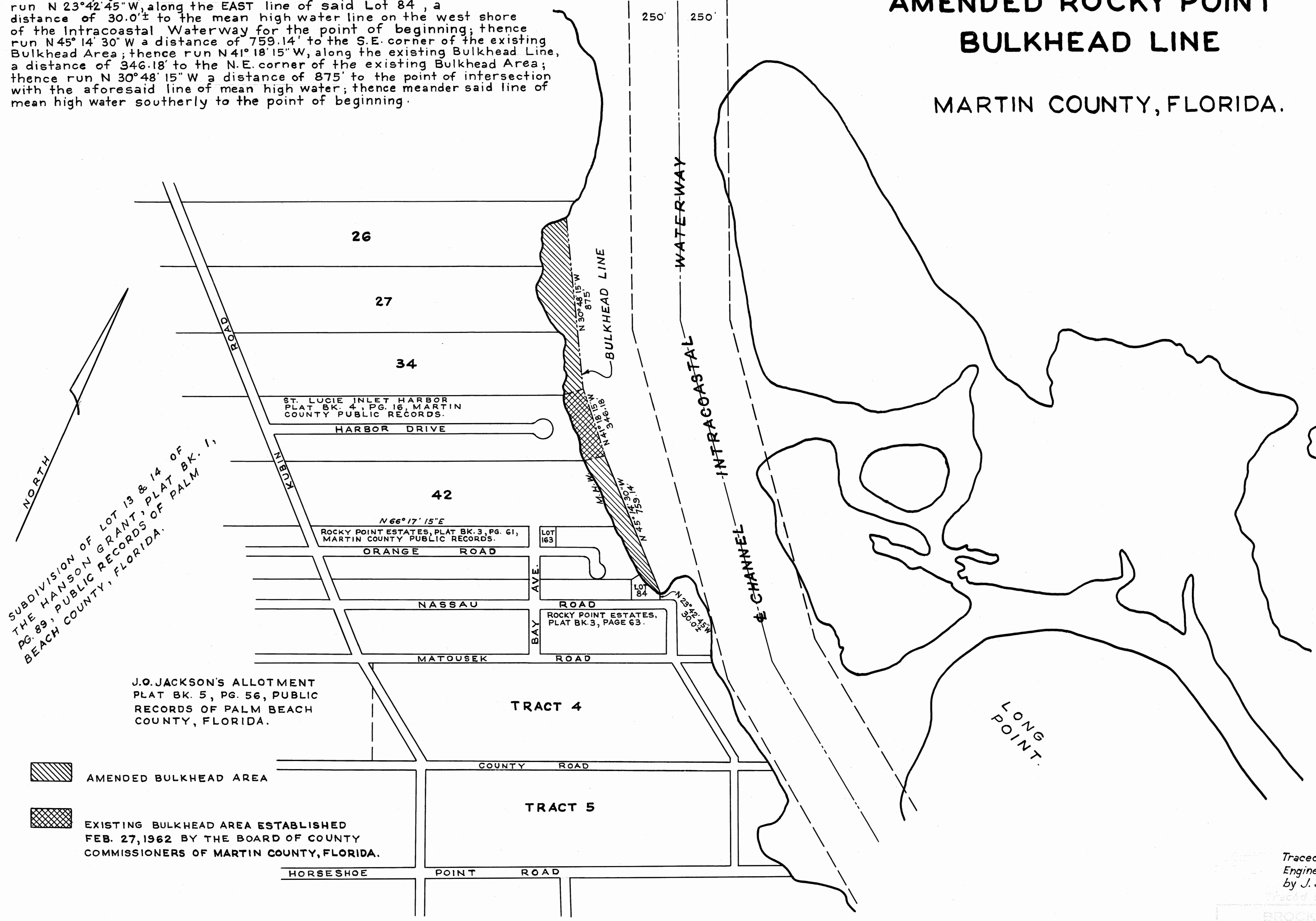
STATE OF FLORIDA }
 COUNTY OF MARTIN } 98.
 This Plat was filed for record at 4:37 P.M.
 this 7th day of DECEMBER
 1962, and duly recorded in Plat Book No.
 4 on page 25.
 DOROTHY PIERCE, Clerk Circuit Court
 By DOROTHY PIERCE

DESCRIPTION OF AMENDED BULKHEAD AREA:

Start at the S.E. corner of Lot 84, Rocky Point Estates, Plat Bk. 3, Pg. 63, Public Records of Martin County, Florida; thence run N 23° 42' 45" W, along the EAST line of said Lot 84, a distance of 30.0' to the mean high water line on the west shore of the Intracoastal Waterway for the point of beginning; thence run N 45° 14' 30" W a distance of 759.14' to the S.E. corner of the existing Bulkhead Area; thence run N 41° 18' 15" W, along the existing Bulkhead Line, a distance of 346.18' to the N.E. corner of the existing Bulkhead Area; thence run N 30° 48' 15" W a distance of 875' to the point of intersection with the aforesaid line of mean high water; thence meander said line of mean high water southerly to the point of beginning.

**AMENDED ROCKY POINT
 BULKHEAD LINE**

MARTIN COUNTY, FLORIDA.



SUBDIVISION OF LOT 13 & 14 OF
 THE HANSON GRANT, PLAT BK. 1,
 PG. 89, PUBLIC RECORDS OF PALM
 BEACH COUNTY, FLORIDA.

J.O. JACKSON'S ALLOTMENT
 PLAT BK. 5, PG. 56, PUBLIC
 RECORDS OF PALM BEACH
 COUNTY, FLORIDA.

AMENDED BULKHEAD AREA
 EXISTING BULKHEAD AREA ESTABLISHED
 FEB. 27, 1962 BY THE BOARD OF COUNTY
 COMMISSIONERS OF MARTIN COUNTY, FLORIDA.

I HEREBY CERTIFY that the plat shown hereon was
 traced from a print of the original plat recorded in Plat
 Book 4, Page 25, Martin County Records.

James E. Brock
 Registered Land Surveyor
 Florida Certificate No. 831

I HEREBY CERTIFY that the plat shown hereon
 is a true and correct representation of a survey, made
 under my direction, and that said survey is accurate to
 the best of my knowledge and belief.

(Signed) JAMES E. BROCK
 Registered Land Surveyor
 Florida Certificate No. 688

Traced in the Office of Brockway, Weber & Brockway,
 Engineers & Surveyors, West Palm Beach, Florida,
 by J. J. Flowers - December 4, 1963

BROCKWAY, WEBER & BROCKWAY
 ENGINEERS - SURVEYORS
 WEST PALM BEACH, FLORIDA

STAFFORD & BROCK
 ENGINEERING - SURVEYING
 STUART, FLORIDA
 SURVEYED AND PLATTED FOR:
 THE BOARD OF COMMISSIONERS
 OF MARTIN COUNTY,
 FLORIDA
 Date: July 10, 1962
 Scale: 1" = 300'
 File No. 15-61